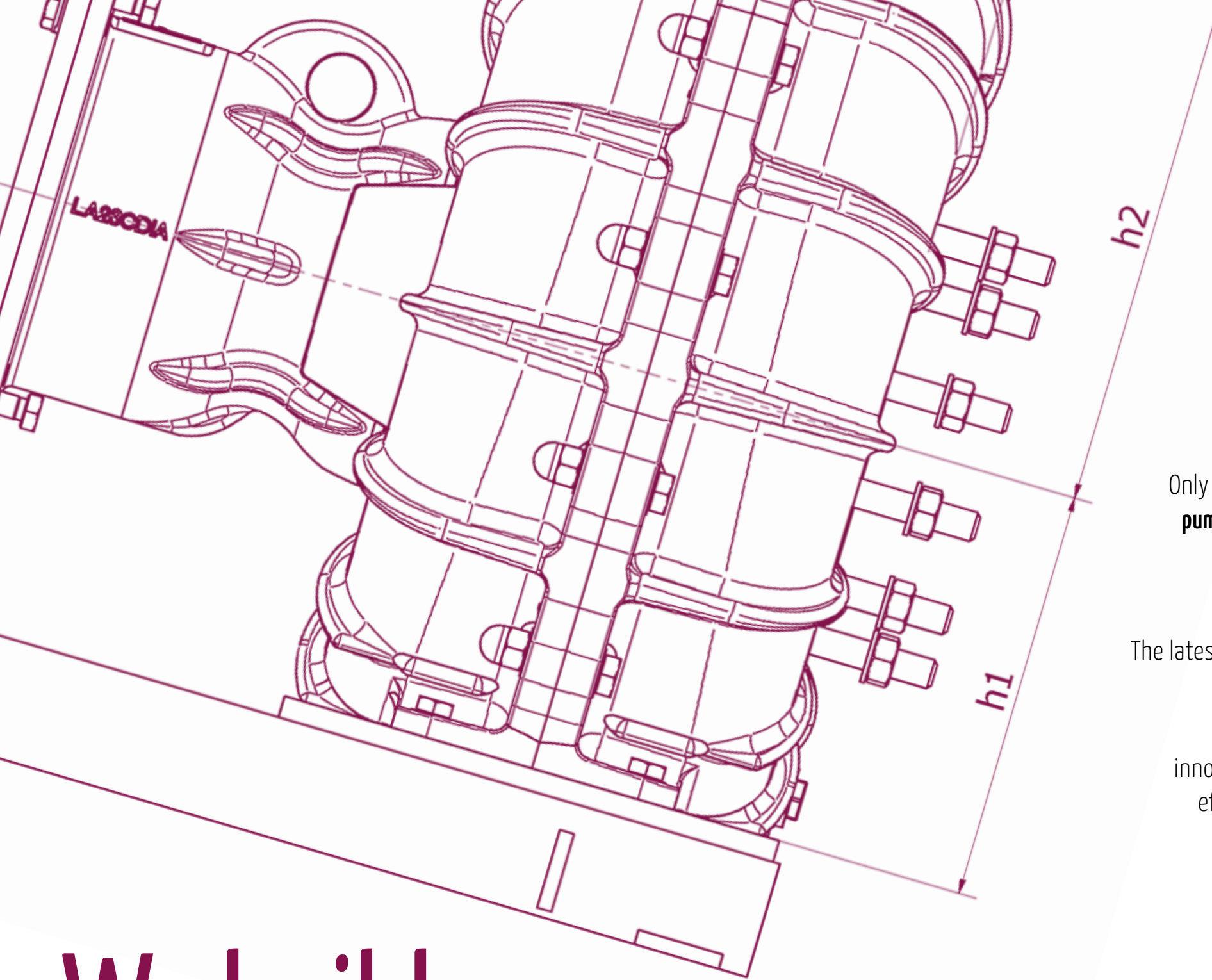




AFFETTI PUMPS

# AFFETTI PUMPS

pumps for corrosive liquids



## Tailor-made solutions that consider every detail, for all your pumping needs.

Our starting point is always a careful and accurate analysis of your needs. Only in this way, **we can find the perfect solution and build you truly made-to-measure pumps**, capable of responding to the often-complicated challenges posed by the corrosive liquids sector.

**Every detail must be analyzed both in selection and design phases.**

The latest generation software, the Agile Pump Selector, allows you to independently identify the machine that best responds to your specific technical needs.

Our know-how, comes from over 40 years of experience and is used to find innovative solutions. We design pumps whose performance is both effective and efficient, in order to meet the needs of **a tailored product, perfect in every detail.**

We build

# UNIQUE SYSTEMS



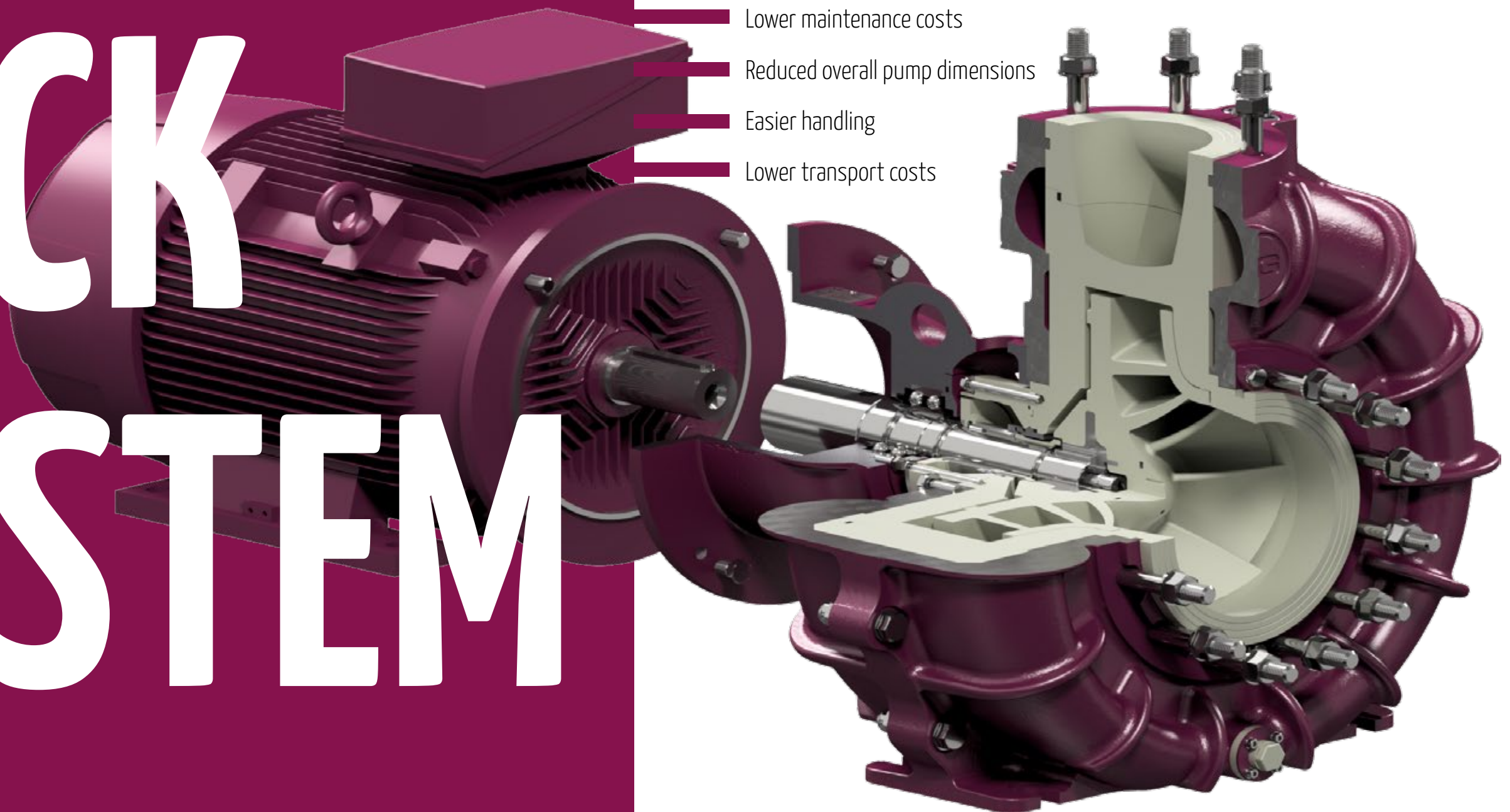
# QUICK LOCK SYSTEM

**Created to anticipate the needs  
of an ever-changing world.**




Have you ever thought that you could achieve the same performance as a Long Coupled pump with a Close Coupled pump? And that you could save on purchase, transportation and maintenance costs as well as the space used to house the pump?

**Quick Lock System** is Affetti's innovative patented solution that connects the e-motor and lantern of Close Coupled pumps to achieve:

- Total absence of flexible or rigid couplings
- Fast and simple assembly system
- Lower maintenance costs
- Reduced overall pump dimensions
- Easier handling
- Lower transport costs



# DESIGNED TO PUMP ANY CORROSIVE FLUID

-  HORIZONTAL CENTRIFUGAL PUMPS
-  SUMP CENTRIFUGAL PUMPS
-  HORIZONTAL CENTRIFUGAL PUMPS WITH MAGNETIC DRIVE
-  VOLUMETRIC SELF-PRIMING PUMPS

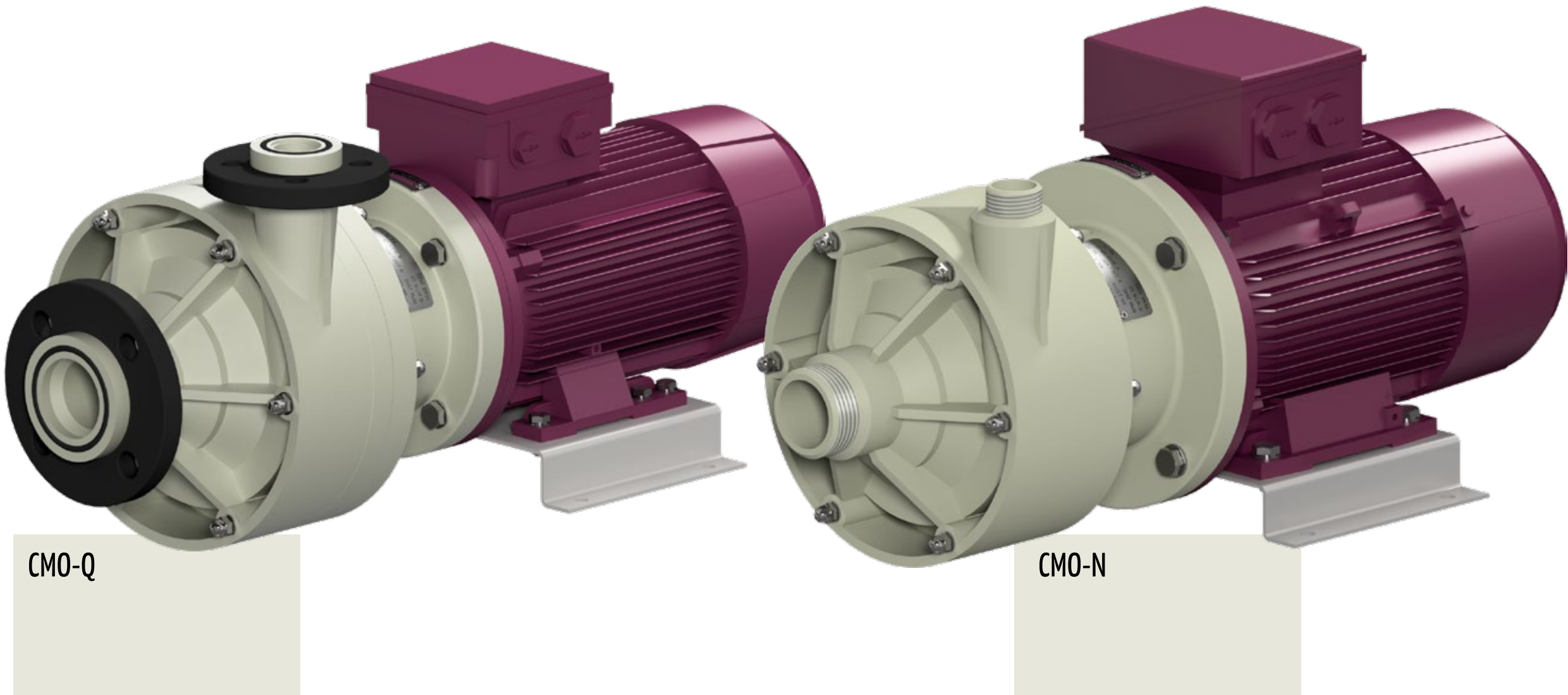
**Special materials, cutting-edge technology  
and Made in Italy know-how.**

In highly corrosive environments products are required to provide a guaranteed performance and efficiency over time Affetti deliver the optimal solution to you by using cutting-edge materials, such as special thermoplastics and fiberglass reinforced resins that are capable of resisting corrosion whilst withstanding abrasive liquids.

# HORIZONTAL CENTRIFUGAL PUMPS

DATA SHEET **CMO-Q** AND **CMO-N**

Series		CMO-Q	CMO-N
Flow	m³/h	5 - 150	
Head	mlc	5 - 56	
Power	kW	0,75 - 22	
Speed rotation	RPM	1450 - 1750 - 2900 - 3500	
Operating temperatures	°C	-10   +80	
Materials		PP - PP EL - PVDF - PVDF EL	
Available		With mechanical seal	
Execution		Close coupled	



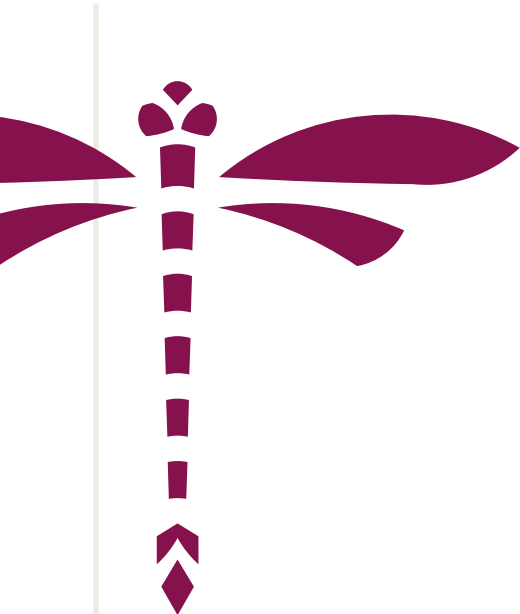
CMO-Q

CMO-N



# NORMALIZED HORIZONTAL CENTRIFUGAL PUMPS

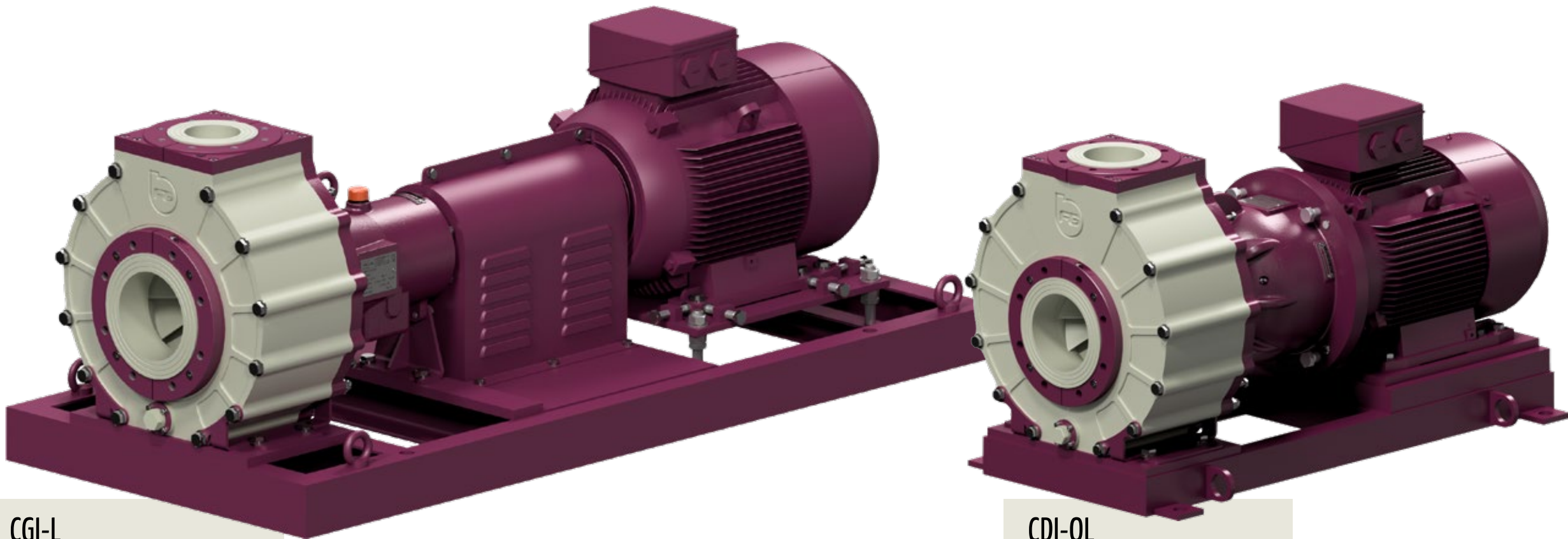
(ISO 2858 - ISO 5199)



LIBRA  
LINE

DATA SHEET **CDI-QL** AND **CGI-L**

Series		CDI-QL	CGI-L
Flow	m³/h	10 - 650	10 - 650
Head	mlc	5 - 80	5 - 80
Power	kW	1,5 - 55	1,5 - 90
Speed rotation	RPM	950 - 1150 - 1450 - 1750 - 2900 - 3500	
Operating temperatures	°C	-20   +70	
Materials		PP - PVDF - PE HD - PE UHMW	
Available		With mechanical seal	
Execution		Close coupled	With base and elastic coupling

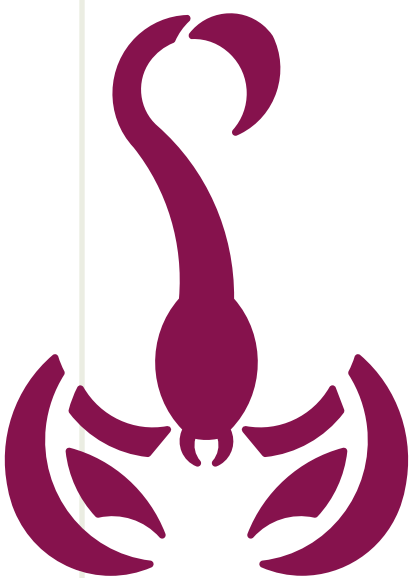


CGI-L

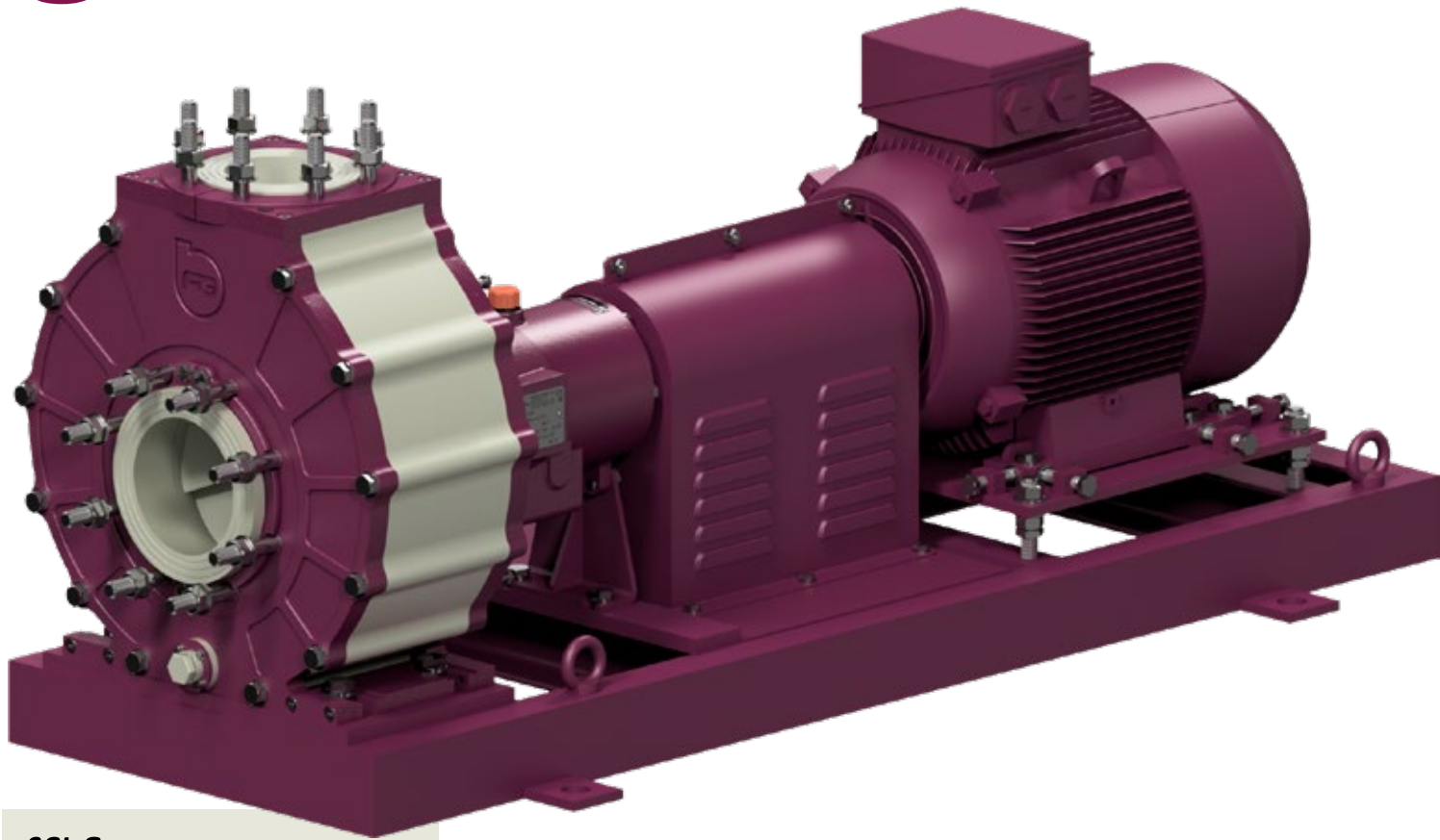
CDI-QL

# NORMALIZED HORIZONTAL CENTRIFUGAL PUMPS

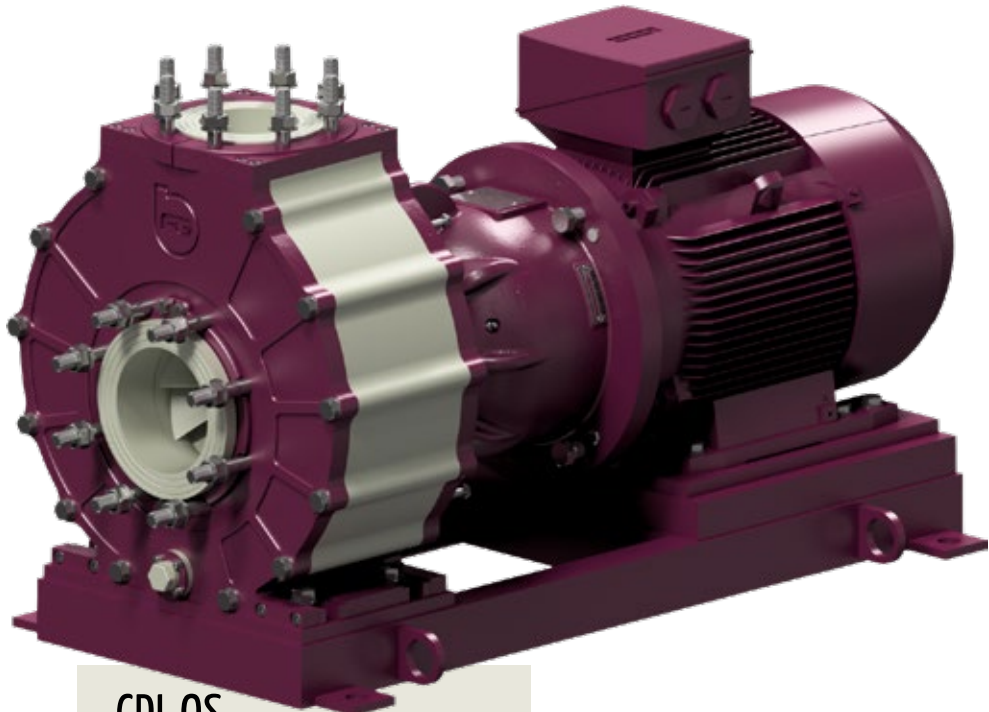
(ISO 2858 - ISO 5199)



SCORPIO  
LINE



CGI-S



CDI-QS

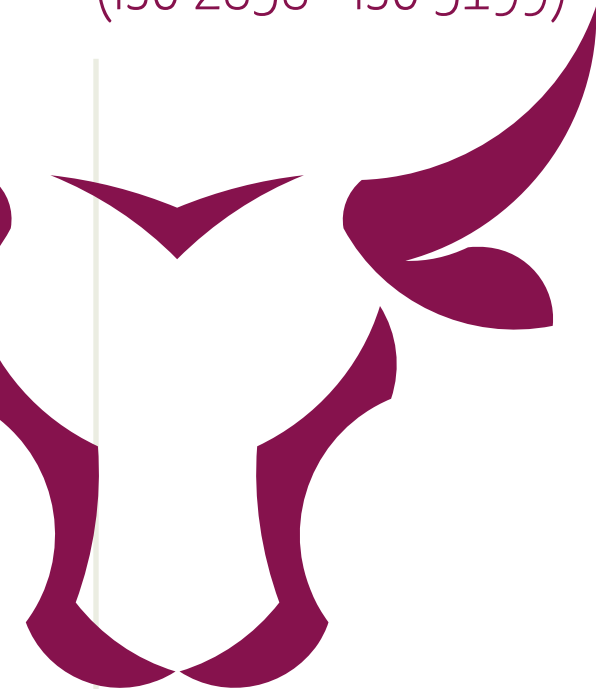
DATA SHEET **CDI-QS** AND **CGI-S**

Series		CDI-QS	CGI-S
Flow	m³/h	10 - 1500	10 - 3500
Head	mlc	5 - 120	5 - 120
Power	kW	1,5 - 90	1,5 - 200
Speed rotation	RPM	950 - 1150 - 1450 - 1750 - 2900 - 3500	
Operating temperatures	°C	-20   +90	
Materials		PP - PVDF - PE HD - PE UHMW	
Available		With mechanical seal	
Execution		Close coupled	With base and elastic coupling



# NORMALIZED HORIZONTAL CENTRIFUGAL PUMPS

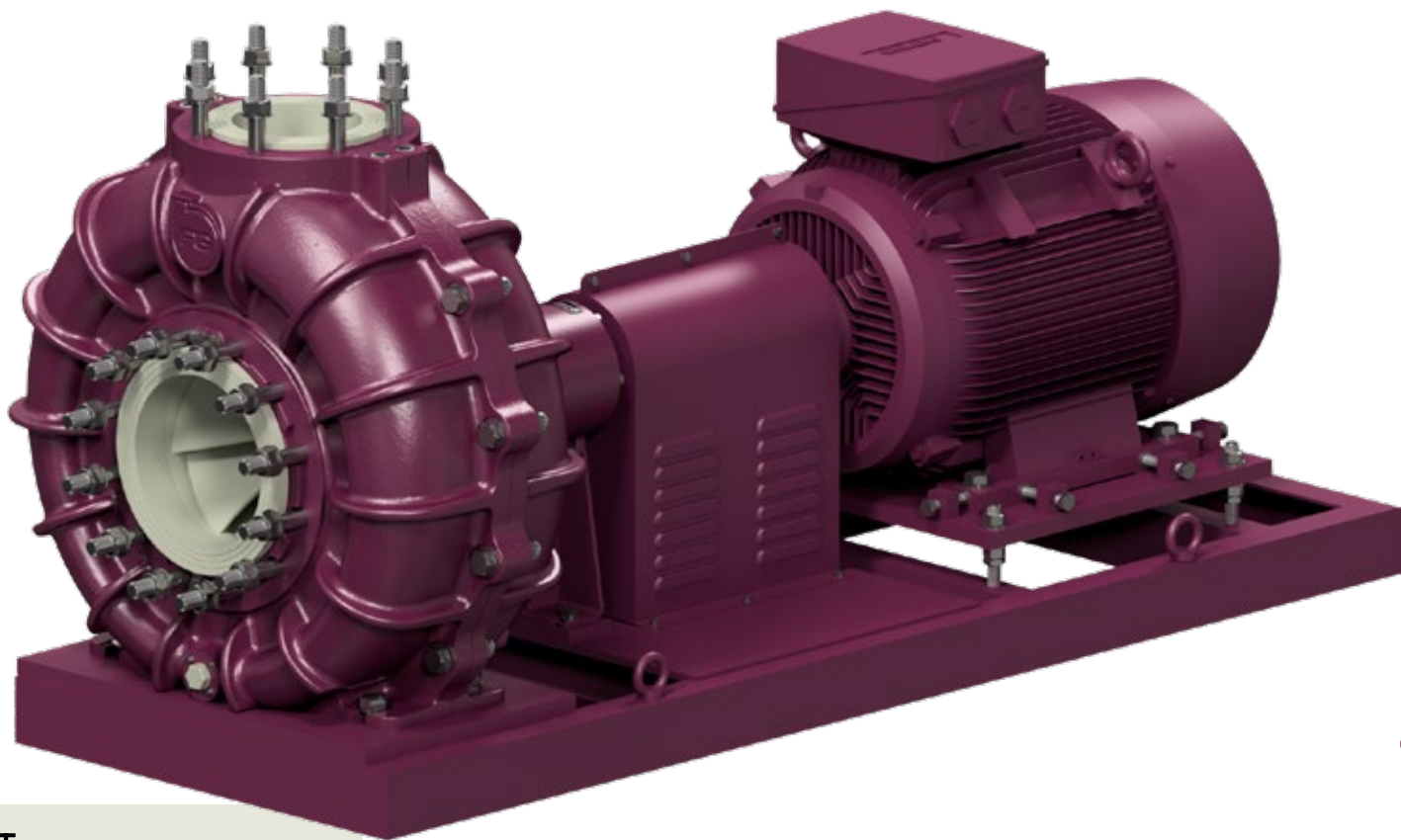
(ISO 2858 - ISO 5199)



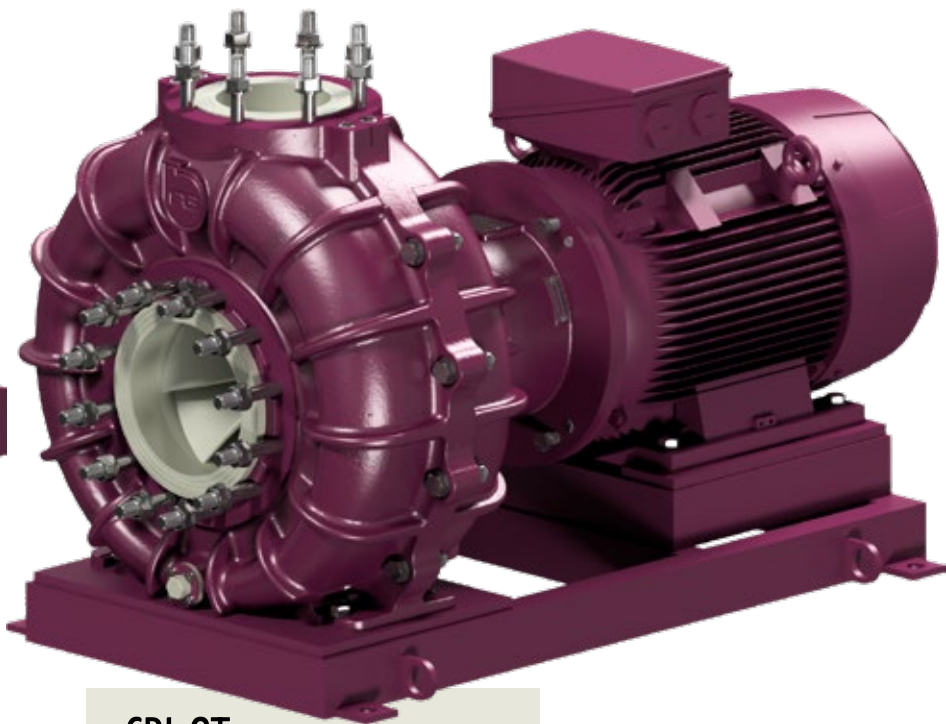
TAURUS  
LINE

DATA SHEET **CDI-QT** AND **CGI-T**

Series		CDI-QT	CGI-T
Flow	m³/h	10 - 1500	10 - 3500
Head	mlc	5 - 160	5 - 160
Power	kW	1,5 - 90	1,5 - 200
Speed rotation	RPM	950 - 1150 - 1450 - 1750 - 2900 - 3500	
Operating temperatures	°C	-20   +110	
Materials		PP - PVDF - PE HD - PE UHMW	
Available		With mechanical seal	
Execution		Close coupled	With base and elastic coupling



CGI-T

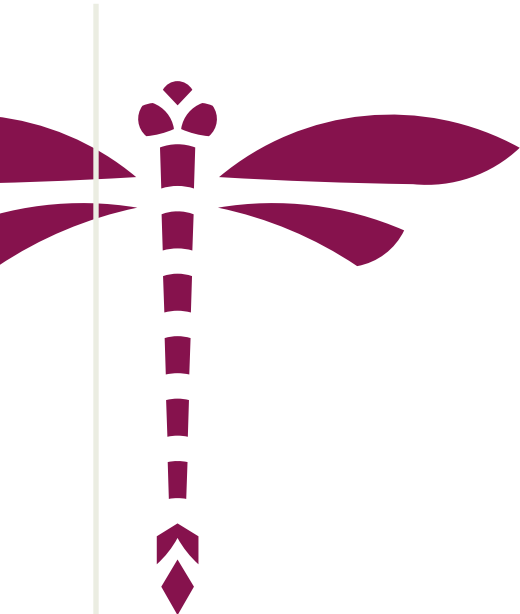


CDI-QT



# NORMALIZED HORIZONTAL CENTRIFUGAL PUMPS

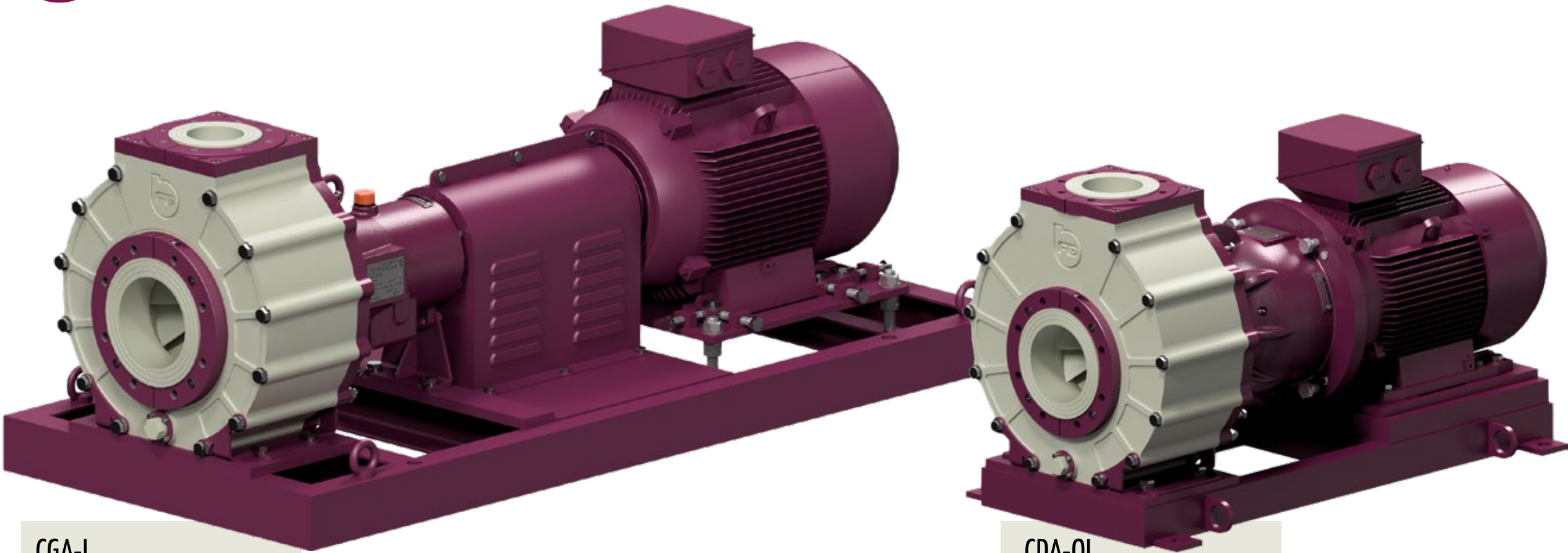
(ANSI - ASME B73.1)



LIBRA  
LINE

DATA SHEET **CDA-QL** AND **CGA-L**

Series		CDA-QL	CGA-L
Flow	m³/h	10 - 650	10 - 650
Head	mlc	5 - 80	5 - 80
Power	kW	1,5 - 55	1,5 - 90
Speed rotation	RPM	950 - 1150 - 1450 - 1750 - 2900 - 3500	
Operating temperatures	°C	-20   +80	
Materials		PP - PVDF - PE HD - PE UHMW	
Available		With mechanical seal	
Execution		Close coupled	With base and elastic coupling



CGA-L

CDA-QL

# NORMALIZED HORIZONTAL CENTRIFUGAL PUMPS

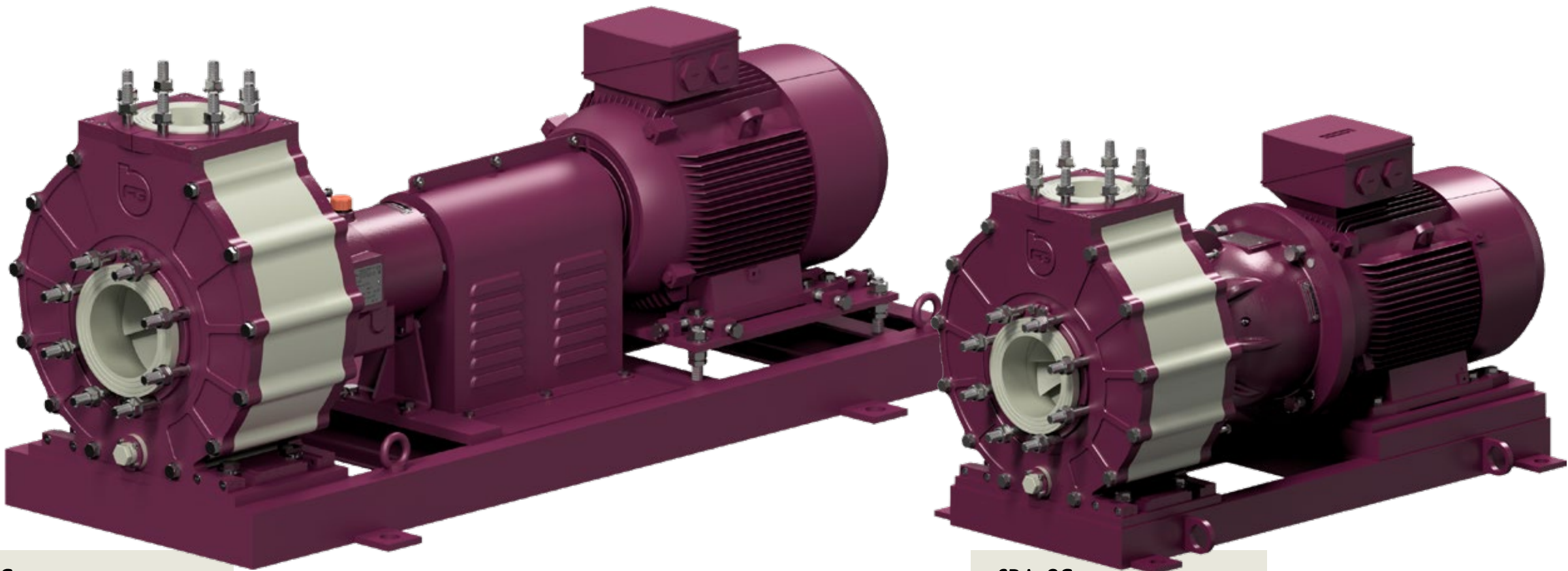
(ANSI - ASME B73.1)



SCORPIO  
LINE

## DATA SHEET **CDA-QS** AND **CGA-S**

Series		CDA-QS	CGA-S
Flow	m³/h	10 - 1500	10 - 3500
Head	mlc	5 - 120	5 - 120
Power	kW	1,5 - 90	1,5 - 200
Speed rotation	RPM	950 - 1150 - 1450 - 1750 - 2900 - 3500	
Operating temperatures	°C	-20   +90	
Materials		PP - PVDF - PE HD - PE UHMW	
Available		With mechanical seal	
Execution		Close coupled	With base and elastic coupling



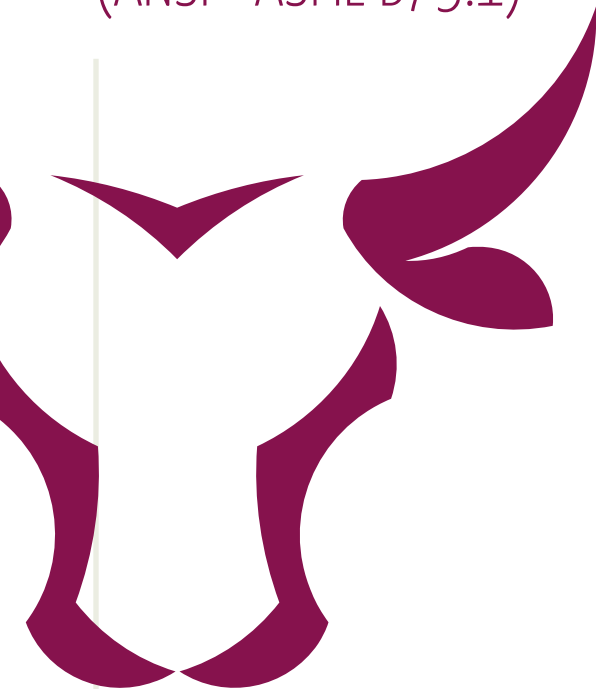
CGA-S

CDA-QS



# NORMALIZED HORIZONTAL CENTRIFUGAL PUMPS

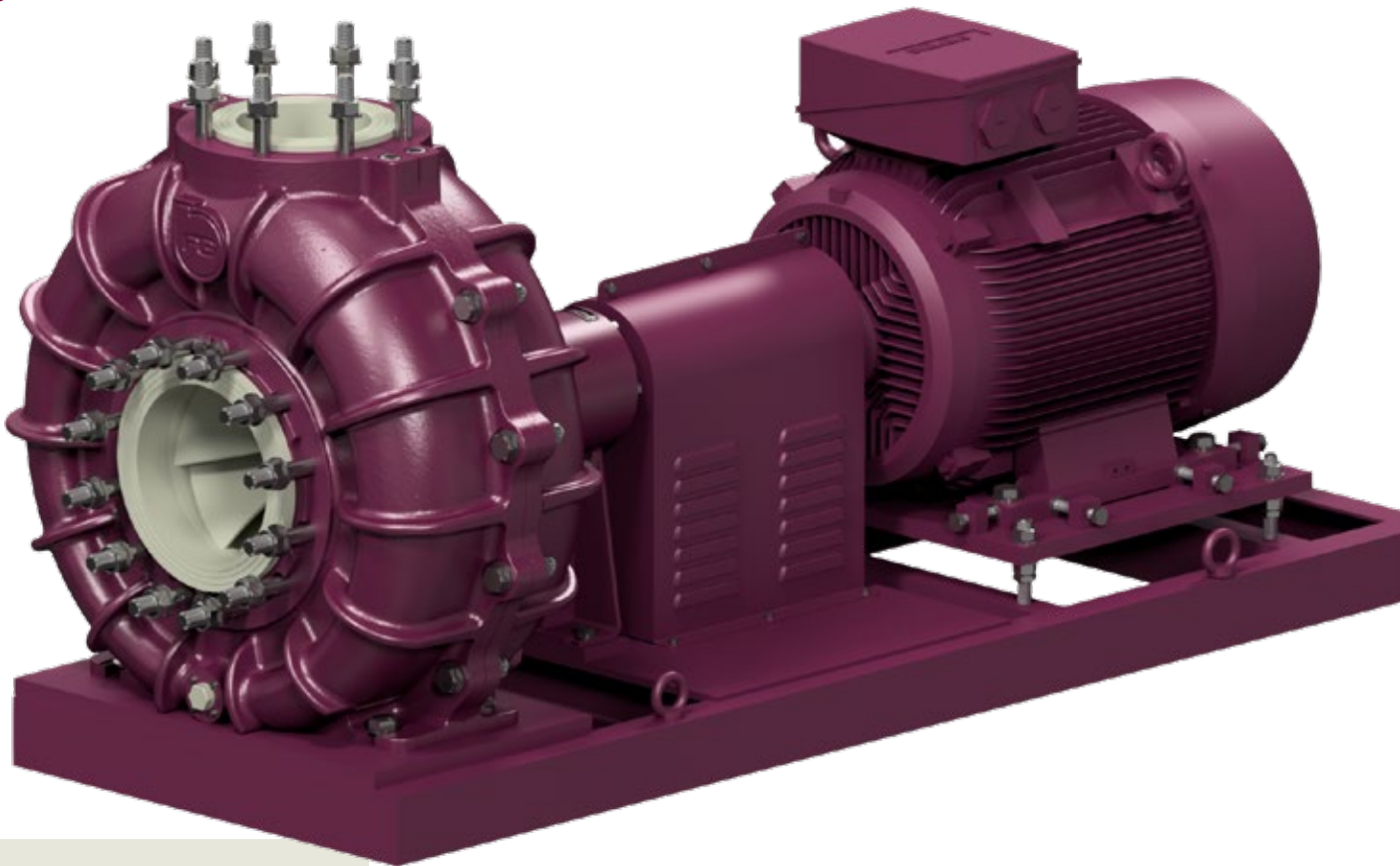
(ANSI - ASME B73.1)



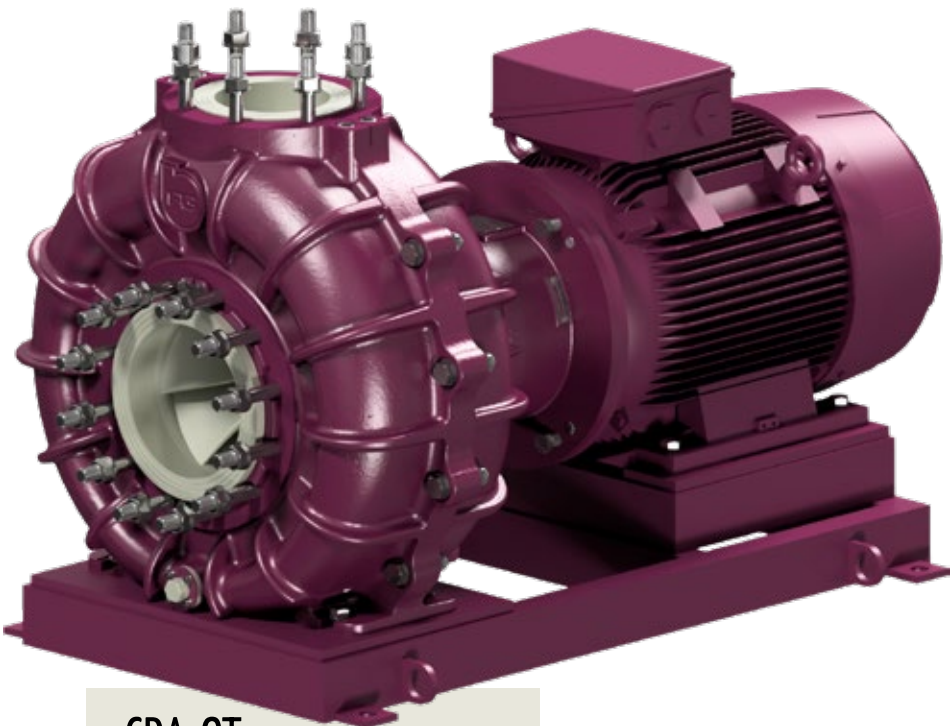
TAURUS  
LINE

DATA SHEET **CDA-QT** AND **CGA-T**

Series		CDA-QT	CGA-T
Flow	m³/h	10 - 1500	10 - 3500
Head	mlc	5 - 160	5 - 160
Power	kW	1,5 - 90	1,5 - 200
Speed rotation	RPM	950 - 1150 - 1450 - 1750 - 2900 - 3500	
Operating temperatures	°C	-20   +110	
Materials		PP - PVDF - PE HD - PE UHMW	
Available		With mechanical seal	
Execution		Close coupled	With base and elastic coupling



CGA-T



CDA-QT



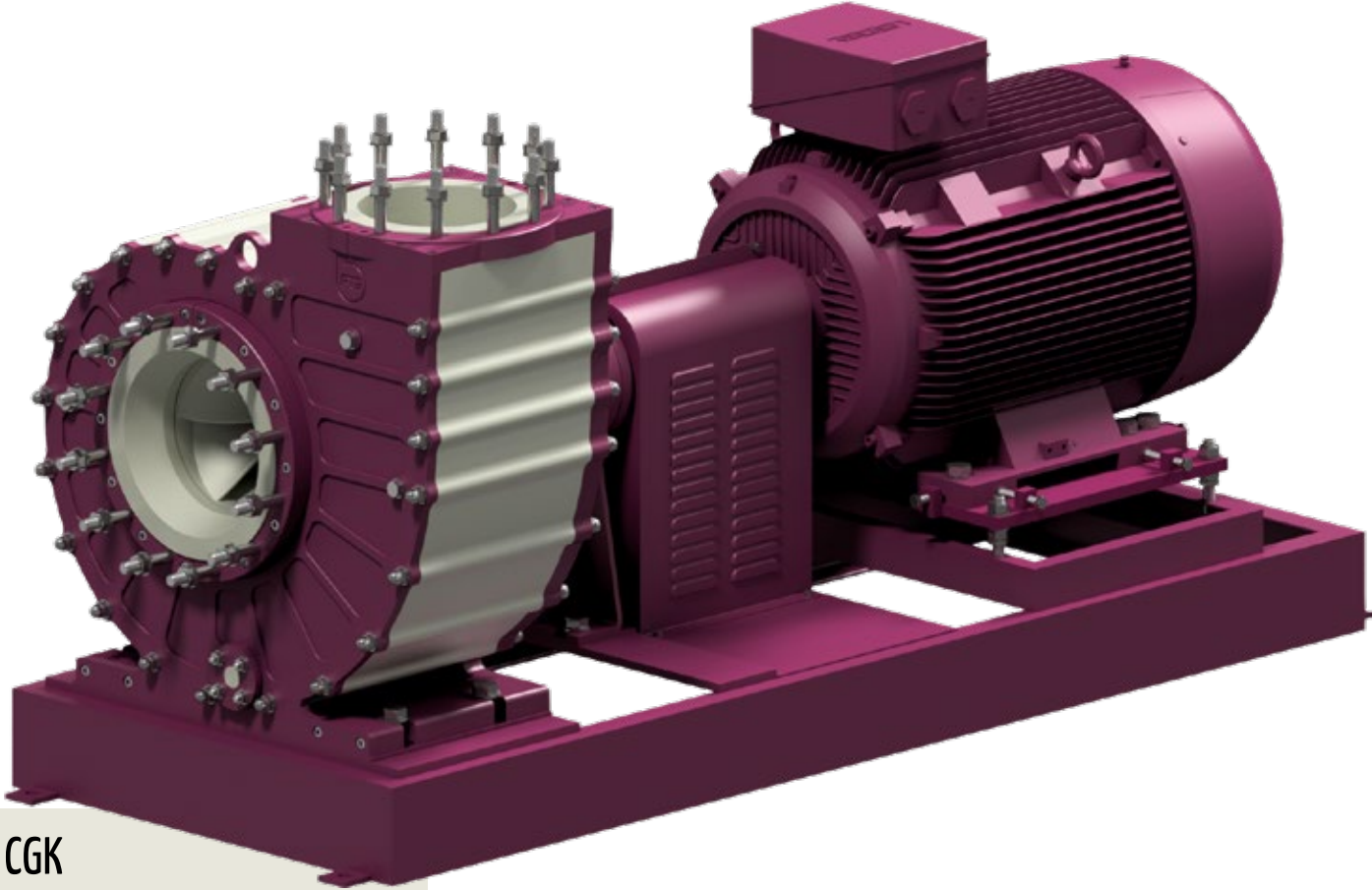
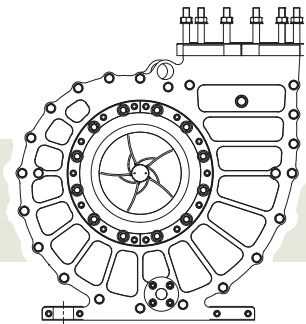
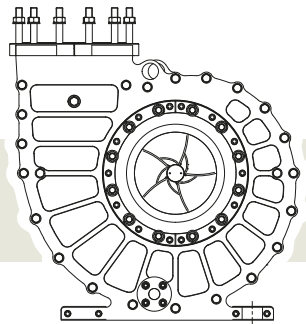
# HIGH FLOW HORIZONTAL CENTRIFUGAL PUMPS

GIGANTUM  
LINE

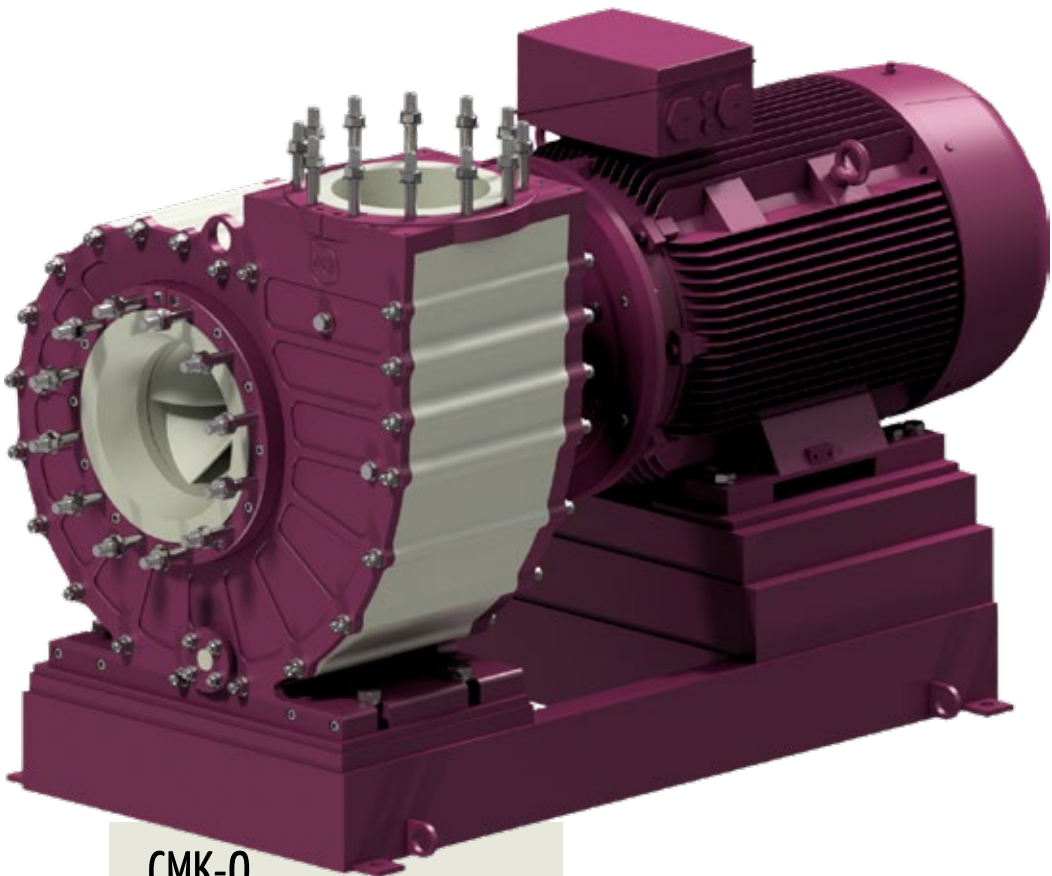
DATA SHEET **CMK-Q** AND **CGK**

Series		CMK-Q	CGK
Flow	m³/h	10 - 2000	200 - 3200
Head	mlc	5 - 25	5 - 55
Power	kW	3 - 90	5,5 - 200
Speed rotation	RPM	750 - 850 - 950 - 1150	
Operating temperatures	°C	-20   +110	-15   +110
Materials		PP - PVDF - PE HD - PE UHMW	
Available		With mechanical seal	
Execution		Close coupled	With base and elastic coupling

Available with left or  
right delivery connections



CGK



CMK-Q

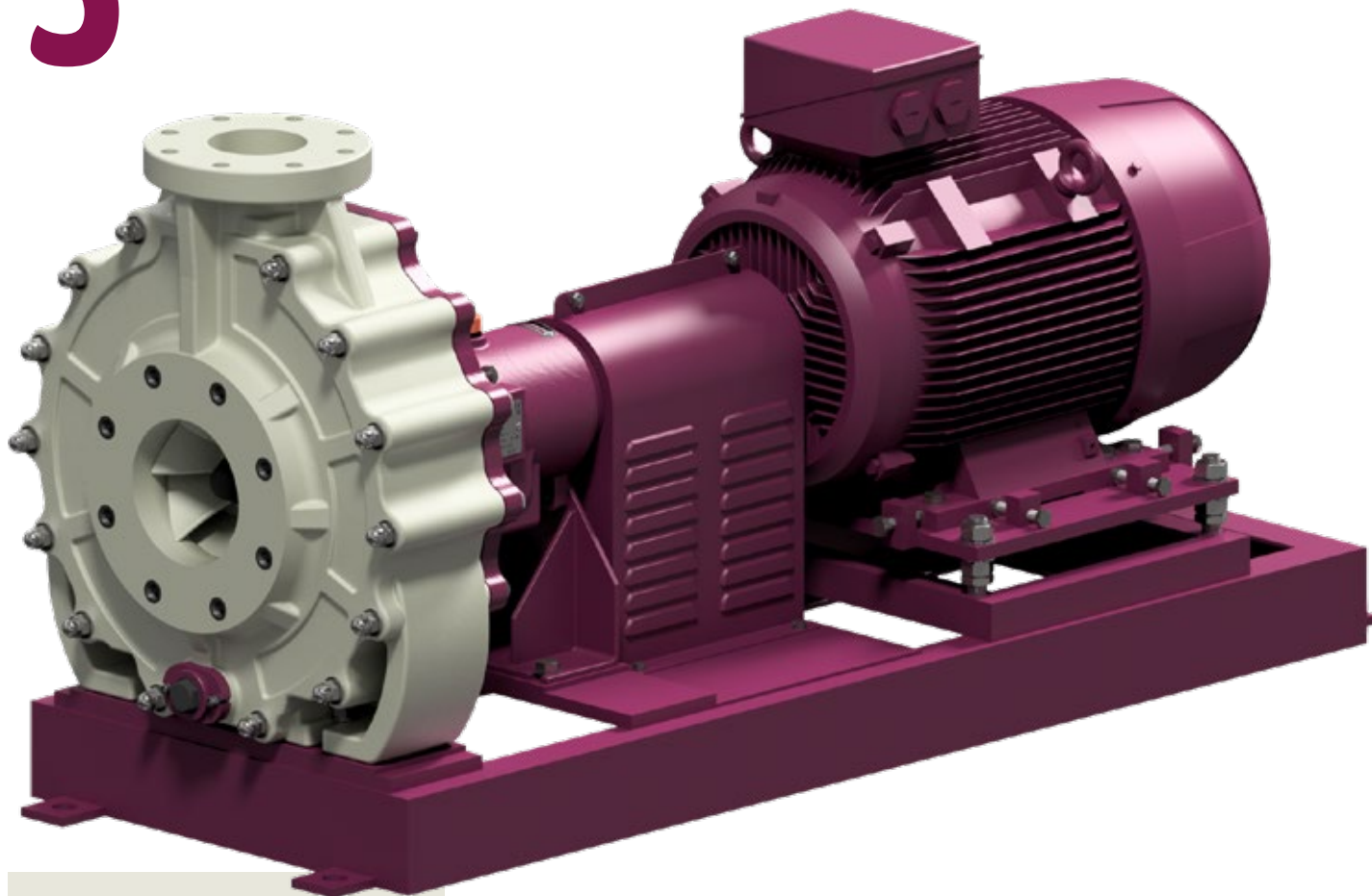
# HORIZONTAL FIBERGLASS CENTRIFUGAL PUMPS

(ANSI - ASME B73.1)

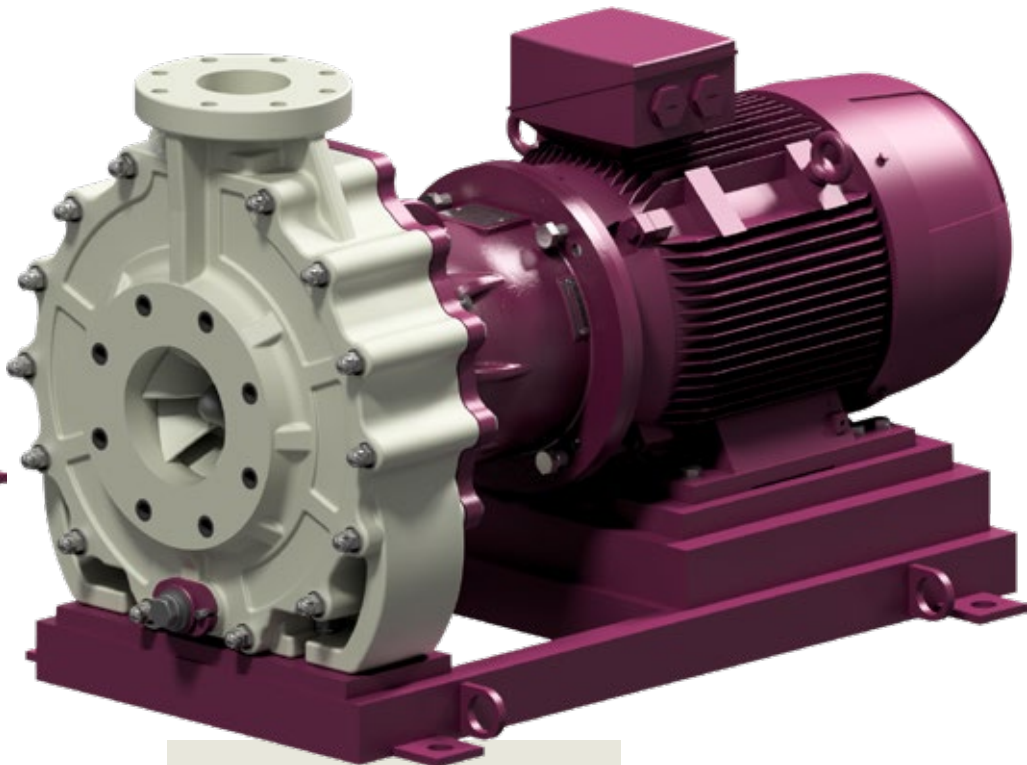
VITRUM  
LINE

DATA SHEET **CFM-Q** AND **CFG**

Series		CFM-Q	CFG
Flow	m³/h	10 - 350	10 -1500
Head	mlc	5 - 72	5 - 120
Power	kW	1,1 - 37	1,1 - 200
Speed rotation	RPM	950 - 1150 - 1450 - 1750 - 2900 - 3500	
Operating temperatures	°C	-20   +120	
Materials		Fiberglass reinforced vinyl ester resin	
Available		With mechanical seal	
Execution		Close coupled	With base and elastic coupling



CFG



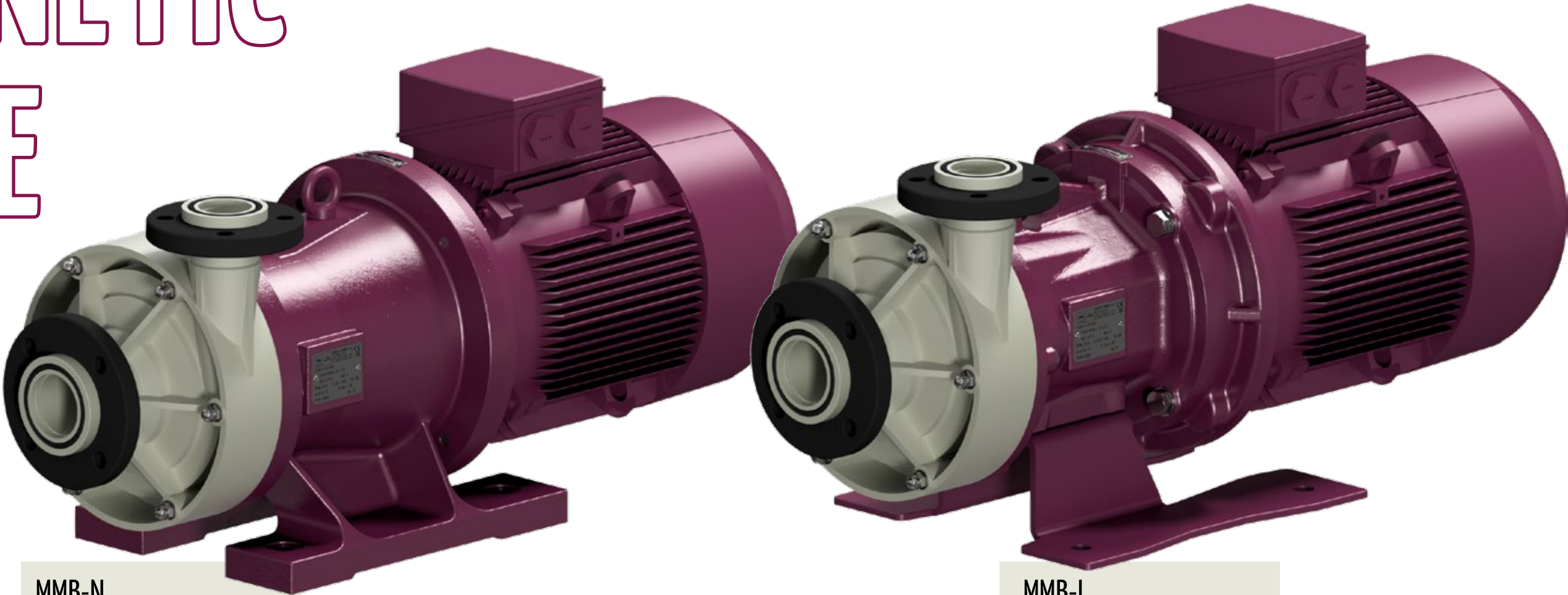
CFM-Q



# HORIZONTAL CENTRIFUGAL PUMPS WITH MAGNETIC DRIVE

DATA SHEET **MMB-L** AND **MMB-N**

Series		MMB-L	MMB-N
Flow	m³/h	5 - 150	
Head	mlc	5 - 56	
Power	kW	1,5 - 18,5	
Speed rotation	RPM	1450 - 1750 - 2900 - 3500	
Operating temperatures	°C	-10   +100	
Materials		PP - PP EL - PVDF - PVDF EL	
Available		With magnetic drive	
Execution		Close coupled	

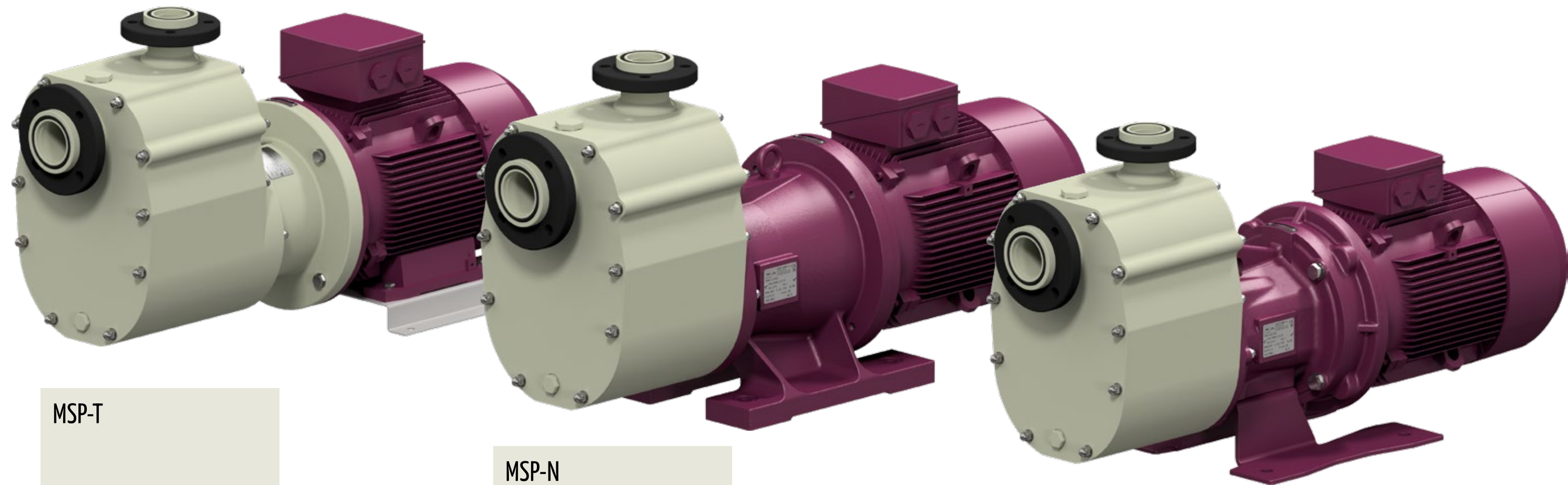




# SELF-PRIMING CENTRIFUGAL PUMPS

DATA SHEET **MSP-L, MSP-N AND MSP-T**

Series		MSP-L	MSP-N	MSP-T
Flow	m³/h	5 - 66		
Head	mlc	10 - 56		
Power	kW	1,5 - 18,5		
Speed rotation	RPM	1450 - 1750 - 2900 - 3500		
Operating temperatures	°C	-10   +100		
Materials		PP - PVDF		
Available		With magnetic drive		With mechanical seal
Execution		Close coupled		



MSP-T

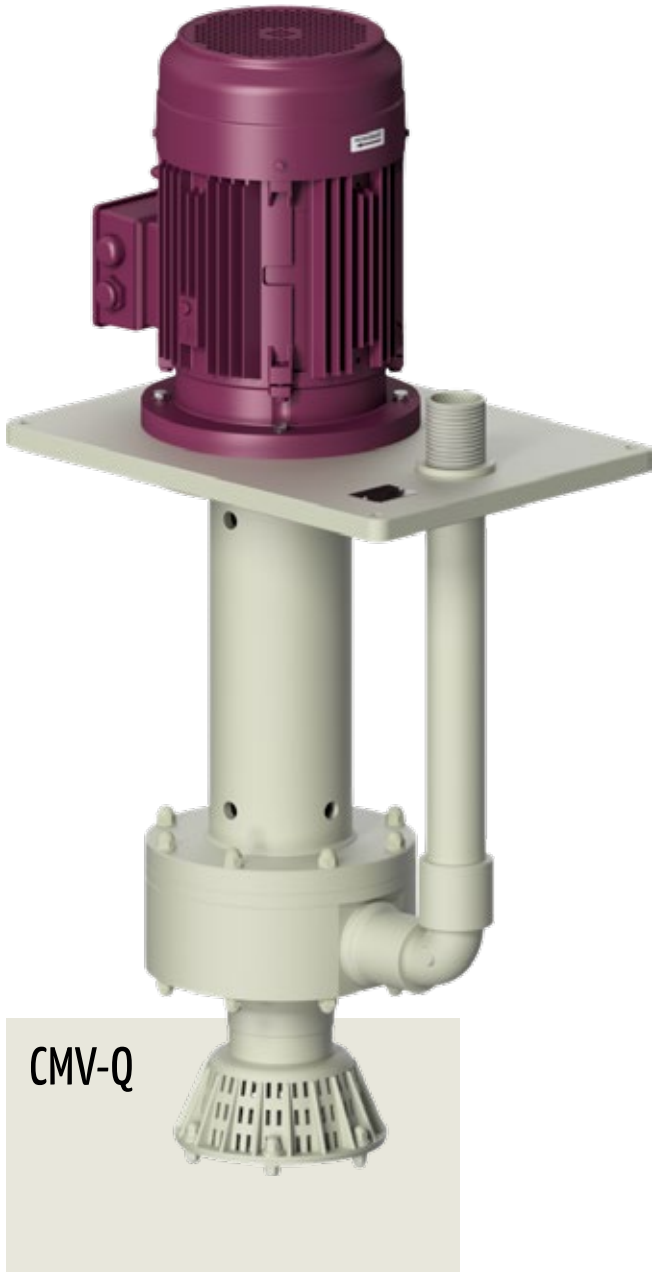
MSP-N

MSP-L

# SUMP CENTRIFUGAL PUMPS

DATA SHEET **CMV-Q**, **CGV-L** AND **CGV-E**

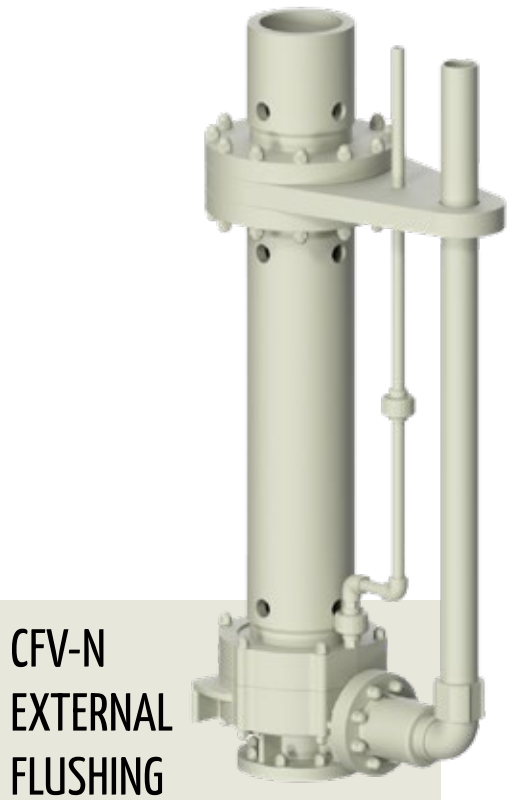
Series		CMV-Q	CGV-L	CGV-E
Flow	m³/h	5 - 100		5 - 790
Head	mlc	6 - 53		6 - 100
Power	kW	0,75 - 22		1,5 - 75
Speed rotation	RPM	950 - 1150 - 1450 - 1750 - 2900 - 3500		
Operating temperatures	°C	-5   +80		-10   +90
Materials		PP - PVDF		PP - PVDF - PE HD - PE UHMW
Pump length	m	From 0,5 to 1	From 0,5 to 3	From 0,5 to 9
Execution		Close coupled	With elastic coupling	



# SUMP FIBERGLASS CENTRIFUGAL PUMPS

## DATA SHEET **CFV-N**

Series		CFV-N
Flow	m³/h	10 - 650
Head	mlc	5 - 90
Power	kW	1,1 - 75
Speed rotation	RPM	950 - 1150 - 1450 - 1750 - 2900 - 3500
Operating temperatures	°C	-10   +90
Materials		Integral fiberglass reinforced vinyl ester resin or with some components in PP
Pump length	m	From 0,5 to 9
Execution		With elastic coupling

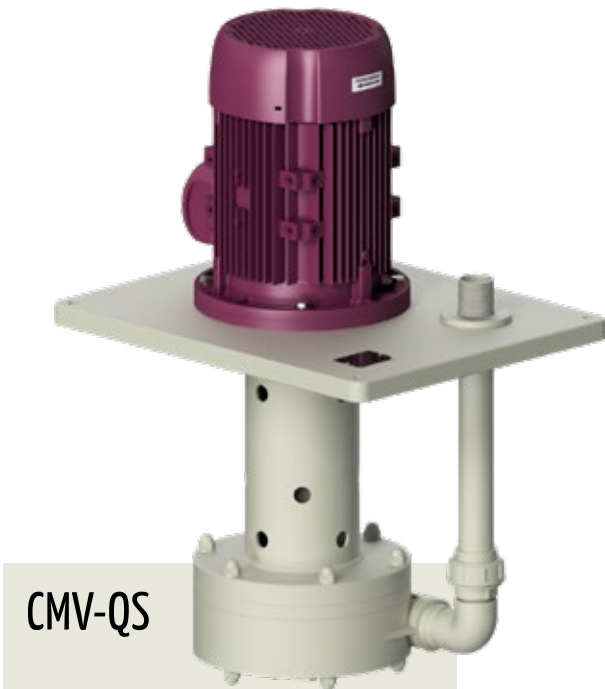




# CANTILEVER CENTRIFUGAL SUMP PUMPS

DATA SHEET **CMV-QS** AND **CGV-S**

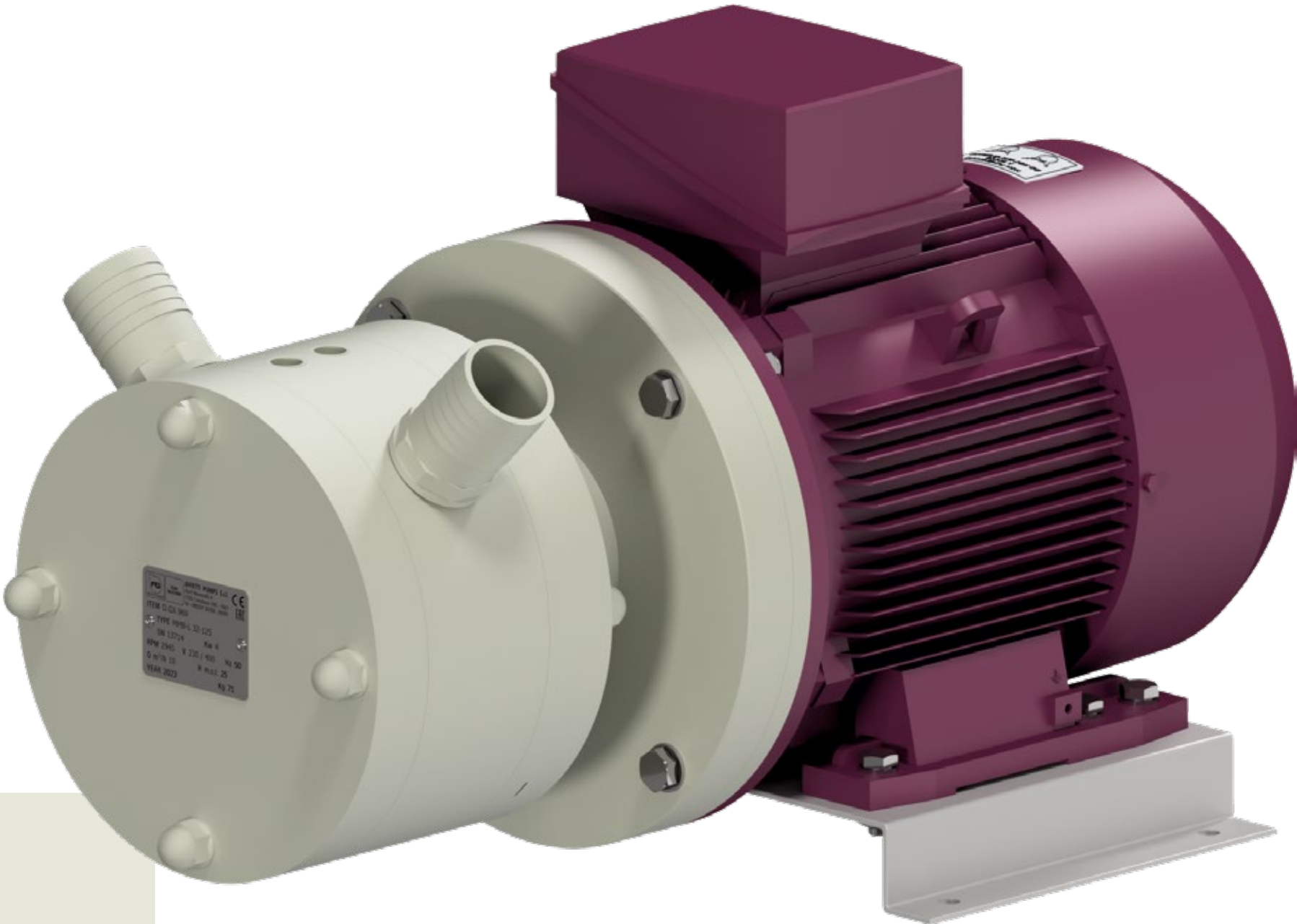
Series		CMV-QS	CGV-S
Flow	m³/h	5 - 90	5 - 450
Head	mlc	6 - 40	6 - 100
Power	kW	0,75 - 22	1,1 - 75
Speed rotation	RPM	950 - 1150 - 1450 - 1750 - 2900 - 3500	
Operating temperatures	°C	-5   +80	-10   +90
Materials		PP - PVDF	PP - PVDF - PE HD - PE UHMW
Pump length	m	From 0,25 to 0,5	From 0,5 to 1,5
Execution		Close coupled	With elastic coupling



# VOLUMETRIC SELF-PRIMING PUMPS

## DATA SHEET **VMA**

Series		VMA	
Flow	m³/h	1,5 - 25	
Head	mlc	1,5 - 30	
Max. suctoin head	mlc	4	
Power	kW	0,25 - 5,5	
Speed rotation	RPM	750 - 850 - 950 - 1150 - 1450 - 1750	
Operating temperatures	°C	-10   +100	
Materials		PP - PVC - PVDF - PEHD	
Available		With double lip seal	
Execution		Close coupled	



VMA

# MADE TO FIT YOUR PUMPING NEEDS

**Your ideal partner, for over 40 years, at your side in finding new solutions. Because your trust is our greatest success.**

Integrity, loyalty and trust; these are the pillars of every relationship we establish with our customers. We support you every step of the way, assessing the operating conditions (e.g. type of liquid to be pumped, concentration, specific weight, flow rate, total head, environmental conditions, etc.) and working with you on the very best solutions. The information that you give us is analyzed by our technical and commercial team, who consider every detail, as attention to detail, is the thing that makes the difference as we all know. Our pumps are in use in over 45 countries around the world, where the value of 'Made in Italy' is appreciated.

Our adventure began in the 60s, inspired by the ideas of founder Giuseppe Affetti and implemented from the 80s onwards with the production of the first thermoplastic electric pumps. Since 2013, the range has been enriched with the production of fibreglass reinforced vinylester resin systems, used by the world's leading engineering companies operating in the electrochlorination and seawater desalination sectors for civil and industrial use.

The sectors we regularly deliver solutions for include: chemical, galvanic, energy, nuclear, iron and steel, fish farming, mining, water and air treatment. In recent years our pumps have also been installed at water parks and marine aquariums, such as in Jakarta, Bali, Kuwait City, Granada, Lisbon, Klaipeda (Lithuania), Ajaccio, Genoa.

MADE IN ITALY

FUNCTIONAL TESTING

APPLICATION FIELDS

SHIPPING SOLUTION

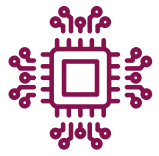
COSTUMER FOCUSED

CARE IN RESEARCH & DESIGN

SPECIAL RAW MATERIALS

CUTTING-EDGE TECHNOLOGY





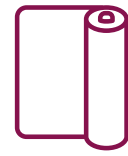
PRINTED CIRCUIT



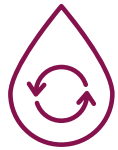
BIODIESEL



AQUARIUM



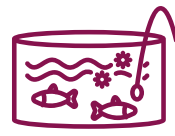
PULP AND PAPER



DESALINATION



AUTOMOTIVE



FISH-FARM



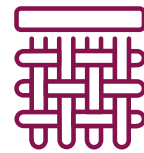
MINING



AIR TREATMENT



WATER TREATMENT



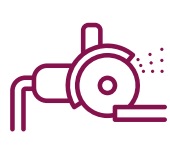
TEXTILE



STORAGE CHEMICALS



PETROCHEMICAL



STEEL



FERTILIZER



REVERSE OSMOSIS

## Advanced solutions for handling corrosive liquids.

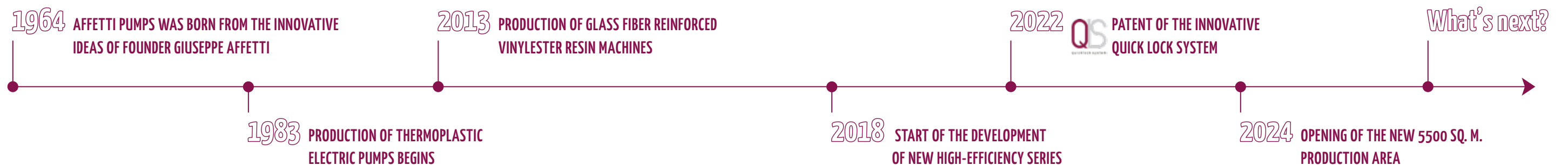
At Affetti Pumps, we are committed to overcoming the challenges of modern industry with pumps that provide maximum reliability and innovation. Each solution is designed to effectively and safely meet the stringent demands of handling corrosive liquids, while maintaining a high focus on cost-effectiveness and environmental protection.

Our commitment to innovation results in a design that not only improves pump performance but also reduces energy consumption and waste, ensuring cleaner and more sustainable processes in multiple industries whose processes handle corrosive liquids with specific managed volume requirements.

# Affetti pumps

# APPLICATION FIELDS

# DIVE INTO THE HISTORY OF AFFETTI PUMPS





## Affetti Pumps s.r.l.

Via Buonarroti 2 | 21053 Castellanza (VA) | Italy

+39 (0) 331 503358 / 505595

**Mail for Italy** vendite@affetti.com

**Mail for other countries** export@affetti.com

[www.affetti.com](http://www.affetti.com)