

Further applications areas:

- Electronic waste
- Refrigeration plant
- Substitute fuels
- Cardboard
- Special waste
- and many more

Innovation is our standard!

As a highly specialised engineering and production company ERDWICH offers exceptional services in recycling and shredder technology, backed up by over 30 years of experience. Shredding machinery, special solutions, complete recycling systems and global services are our core competencies, to which our team dedicates itself enthusiastically every day.

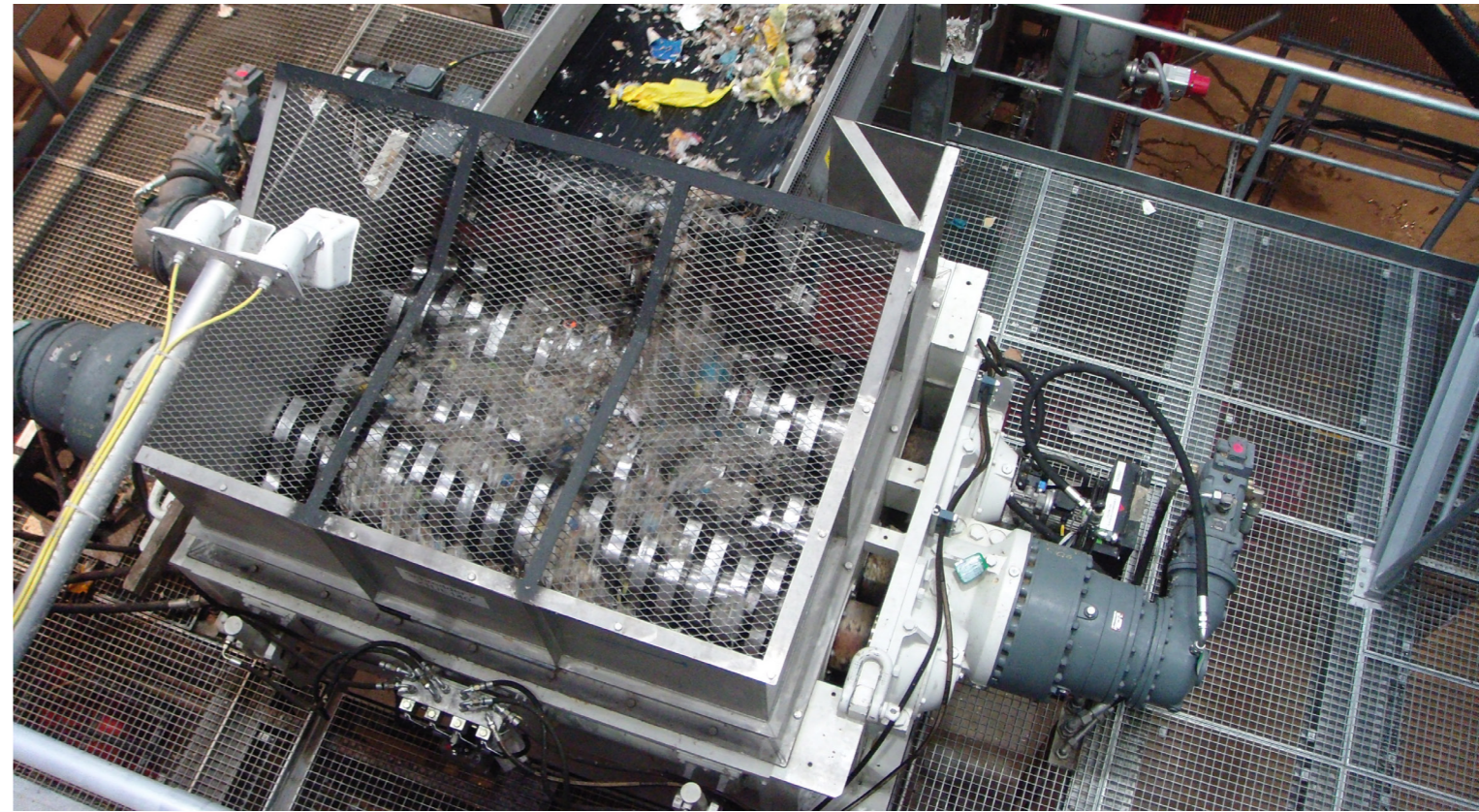
Owner-managed, with personal, intensive support, short reaction times and comprehensive service, we offer our customers first-class quality made in Bavaria. Get to know us.

Welcome!

Core competencies:

- Shredding machinery
- Plant engineering
- Service

REJECT PROCESSING



Take advantage of your opportunity and test your material without any obligation in the ERDWICH Test Centre. We look forward to seeing you there.



CRUSHING PLANTS WITH SPECIAL BULKHEAD WALL FOR WET MATERIALS!

ERDWICH ZERKLEINERUNGSSYSTEME GMBH

Gewerbestraße 6
D-86859 Igling
Tel.: +49 (0)8191 - 96 52 - 0
Fax: +49 (0)8191 - 96 52 - 16
E-Mail: infoline@erdwich.de

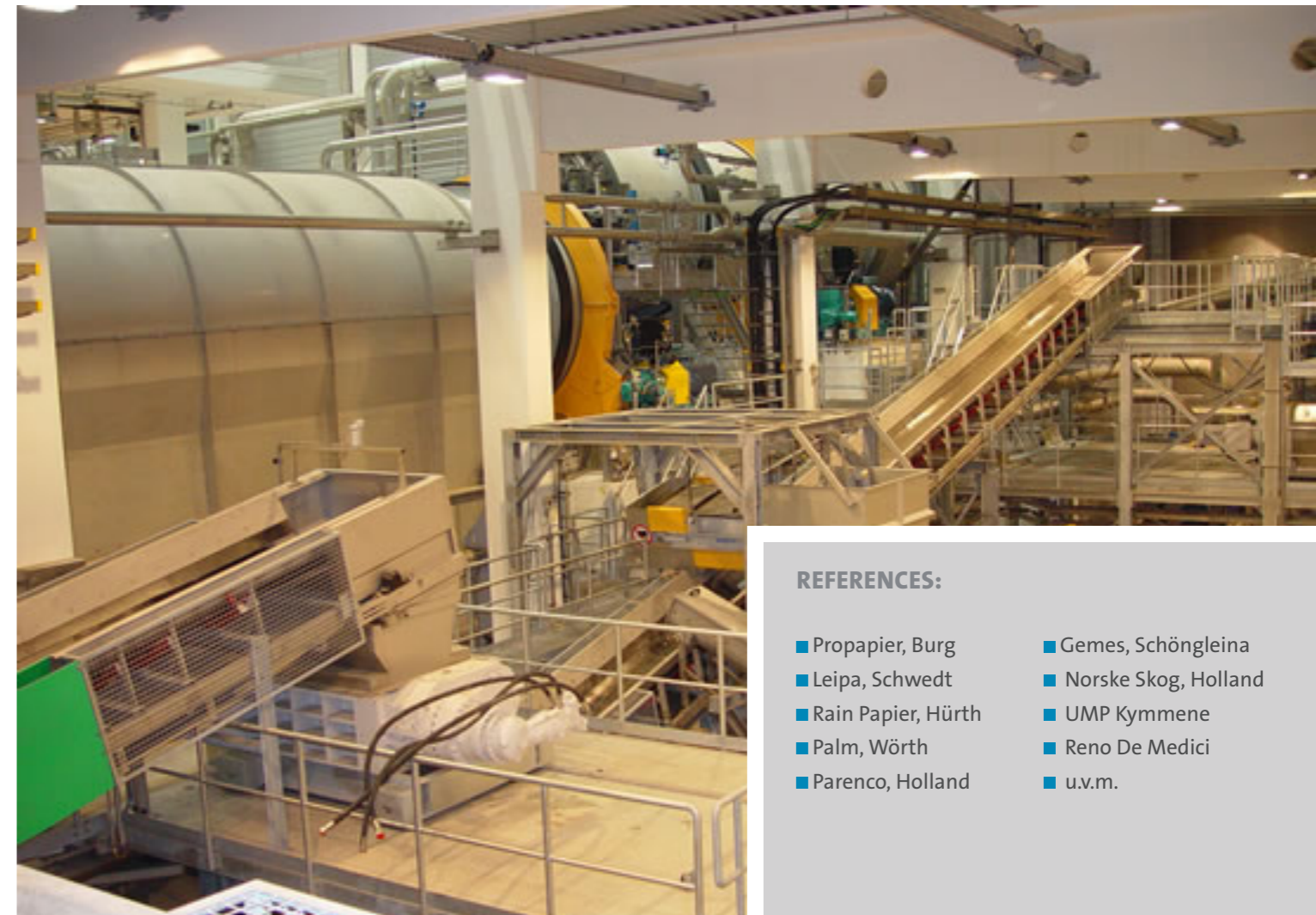
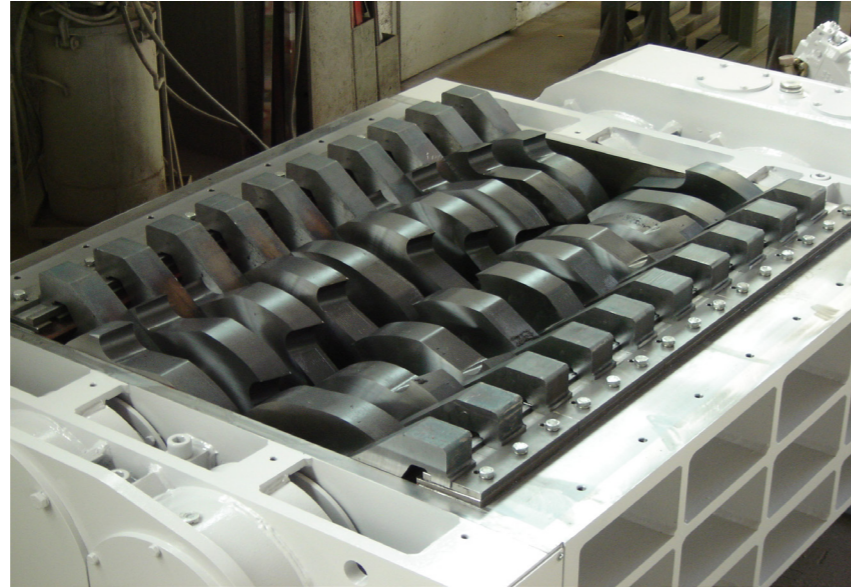
www.erdwich.com

www.erdwich.com

Made in Bavaria

REJECT PROCESSING

FROM WASTE TO ENERGY



REFERENCES:

- Propapier, Burg
- Leipa, Schwedt
- Rain Papier, Hürth
- Palm, Wörth
- Parenco, Holland
- Gemes, Schöngleina
- Norske Skog, Holland
- UMP Kymmene
- Reno De Medici
- u.v.m.

Efficient processing of recycled paper in continuous operation!

In paper production, recovered paper and, in some cases, beverage cartons are recycled to produce paper products again. In the first step of stock preparation, large quantities of recovered paper are dissolved and defibrated in so-called pulping drums or pulper with process water.

The impurities in waste paper, mainly in the form of plastics, are separated from the paper during production.

This residual fraction is known as reject and contains approx. 25% (coarse) fibres, 25% plastic and 50% moisture. Given the calorific value of this material, it is excellent as a secondary fuel.

In order to use this material as a secondary fuel for its own use, the material must be crushed and then dewatered.

Special advantage of ERDWICH shredders for processing wet materials:

■ Bearing sealing with bulkhead wall

In order to protect the actual bearing seal with labyrinth seal, the ERDWICH shredder has an additional, upstream seal by means of stuffing boxes, which are separated from the cutterbar by an additional wear-protected bulkhead wall.

■ bulkhead wall also serves as wear protection at the same time

The bulkhead is also a protection against wear, as the machine housing does not come into contact with the bearing or material. In addition, the machine bearing support is reliably protected against the ingress of liquids and dust by the fabric bushing seal, which can be replaced in no time at all.

■ Low-maintenance machines to guarantee continuous operation

■ Robust cutterbars for shredding even thicker materials

In addition to the loose material from the pulping drum, so-called pulper braids can also be used. Due to the large quantity of metal wires, the shredder must be particularly robust.

Since most paper mills work 365 days a day in 24-hour operation, the machine must be designed for continuous operation. In order to be able to guarantee a smooth production process, ERDWICH machines are particularly low-maintenance, but can be easily serviced without great effort and without long delays if required.

Many systems are installed in a traversable state so that they can be quickly removed from the production cycle in case of repair or major maintenance work without interrupting the process.

The shredded and thus homogeneous material is continuously discharged and largely separated from the metal by means of an overbelt magnetic separator. It is then either transported directly to its own combustion plant or further comminuted in a further processing stage.

Depending on the treatment process and plant size, different amounts of residual fractions are produced. Depending on the requirements, ERDWICH offers the appropriate machine technology and size.

Whether with a hydraulic drive with constant speed or with mechanical drive variations with different speeds, ERDWICH offers customer-specific solutions depending on the requirements and material.

With the unique details such as the double bearing seal with bulkhead, heavy machine designs with a high service friendliness, ERDWICH convinces as always on the whole line.

See for yourself!